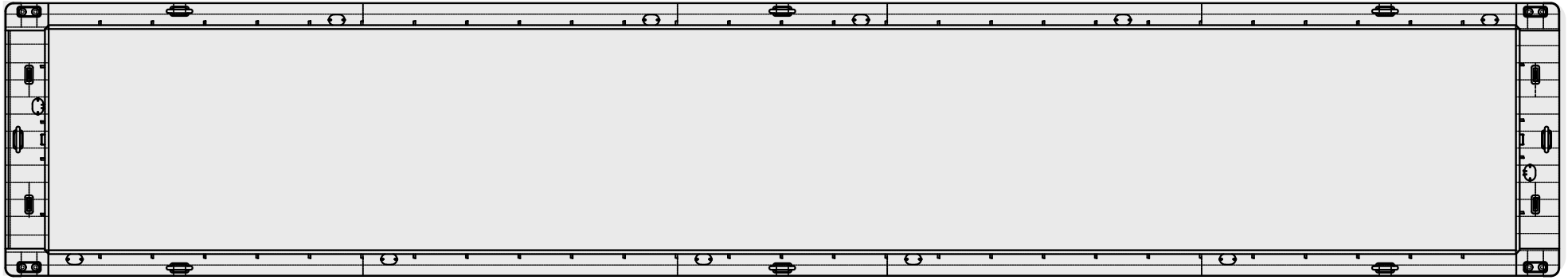
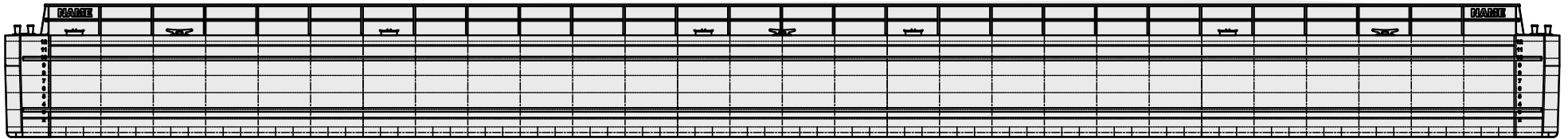


PLAN



PROFILE



DESCRIPTION

- 200' X 35' X 13'-0"
- 4'-0" Coaming
- Fiberglass lift-off covers

VOIDS

- Rake
- Stern
- 5 Mid-Body
- Upper and Lower Rub Bars 6" x 3/4"

DECK FITTINGS

- 10" Double Bitt (4)
- 36" Cast Steel Kevels (8)
- "D"-Rings (4)
- 15" x 23" 2-Dog R.W.T. Hatch (12)
- Ladders on Bow and Stern
- No winches

SCANTLING

- 3/4" Stern Corners, Stern Log, Bow Head Log, and Bow Corner Wraps
- 1/2" Innerbottom
- 3/8" Cargo Wall
- 3/8" Gunwale

- 3/8" Sides
- 5/8" Bilge Knuckle
- 3/8" Mid-Body Bottom
- 5/8" End Bottoms
- 6" x 6" x 1/2" Boundry Angle

COATINGS

- All Steel (Plate and Structural) Wheelabrated SSPC-SP-10
- Pre-Construction Zinc Primer 0.50 to 0.75 MILS
- Stripe Coat bottom welds in Mid-Body and Stern
- Interior Voids - Lower 24" with Void Coat at 4.0 to 6.0MILS - SeaGuard 1050 standard

COATINGS cont.

- Exterior - 1 coat Epoxy 6.0 to 8.0 MILS - SeaGuard 6000 Haze Gray standard
- Non-skid on walking decks and hatch lids 95- Black Beauty standardo
- Cargo Area - None
- 6" Safety Stripe around perimeter painted yellow - standard
- Manhole and Deck fittings painted white - standard
- Barge Name - 6 places - cut from plate steel

B-38

PERSONABLE. RELIABLE. FLEXIBLE.

B-38 DRAFT TABLES

[Without fiberglass covers]

SHORT TONS CARGO (without covers)													
FEET →	1	2	3	4	5	6	7	8	9	10	11	12	13
INCHES ↓													
0	-	117	334	552	770	989	1207	1426	1645	1864	2084	2303	2523
1	-	135	352	570	788	1007	1225	1444	1663	1882	2102	2322	0
2	-	153	371	588	807	1025	1244	1462	1681	1901	2120	2340	0
3	-	171	389	607	825	1043	1262	1481	1700	1919	2139	2358	0
4	-	189	407	625	843	1061	1280	1499	1718	1937	2157	2377	0
5	-	207	425	643	861	1080	1298	1517	1736	1956	2175	2395	0
6	8	225	443	661	879	1098	1316	1535	1755	1974	2194	2413	0
7	26	244	461	679	898	1116	1335	1554	1773	1992	2212	2432	0
8	44	262	479	697	916	1134	1353	1572	1791	2010	2230	2450	0
9	62	280	498	716	934	1152	1371	1590	1809	2029	2248	2468	0
10	80	298	516	734	952	1171	1389	1608	1828	2047	2267	2487	0
11	98	316	534	752	970	1189	1408	1627	1846	2065	2285	2505	0

Table for avg reading with barge afloat on even keel, FRESH water = 318 SHORT TONS barge weight, no covers
 Cargo Hopper Volume = 84,408 Cu. Ft. (Struck)

[With fiberglass covers]

SHORT TONS CARGO (with covers)													
FEET →	1	2	3	4	5	6	7	8	9	10	11	12	13
INCHES ↓													
0	-	107	324	542	760	979	1197	1416	1635	1854	2074	2293	2513
1	-	125	342	560	778	997	1215	1434	1653	1872	2092	2312	0
2	-	143	361	578	797	1015	1234	1452	1671	1891	2110	2330	0
3	-	161	379	597	815	1033	1252	1471	1690	1909	2129	2348	0
4	-	179	397	615	833	1051	1270	1489	1708	1927	2147	2367	0
5	-	197	415	633	851	1070	1288	1507	1726	1946	2165	2385	0
6	-	215	433	651	869	1088	1306	1525	1745	1964	2184	2403	0
7	16	234	451	669	888	1106	1325	1544	1763	1982	2202	2422	0
8	34	252	469	687	906	1124	1343	1562	1781	2000	2220	2440	0
9	52.22 ¹⁸	270	488	706	924	1142	1361	1580	1799	2019	2238	2458	0
10	70	288	506	724	942	1161	1379	1598	1818	2037	2257	2477	0
11	88	306	524	742	960	1179	1398	1617	1836	2055	2275	2495	0

Table for avg reading with barge afloat on even keel, FRESH water = 328 SHORT TONS barge weight + 10 tons for fiberglass covers
 Cargo Hopper Volume = 84,408 Cu. Ft. (Struck)

B-38

PERSONABLE. RELIABLE. FLEXIBLE.

Heartland Barge Management, L.L.C.,
 1007 North Main St
 Columbia, IL 62236

phone: 618-281-4515
 fax: 618-281-4545
 web: HL-Barge.com

contact: Andrew Holthaus
 direct: 618-281-4569
 email: andrew.holthaus@HL-Companies.com

