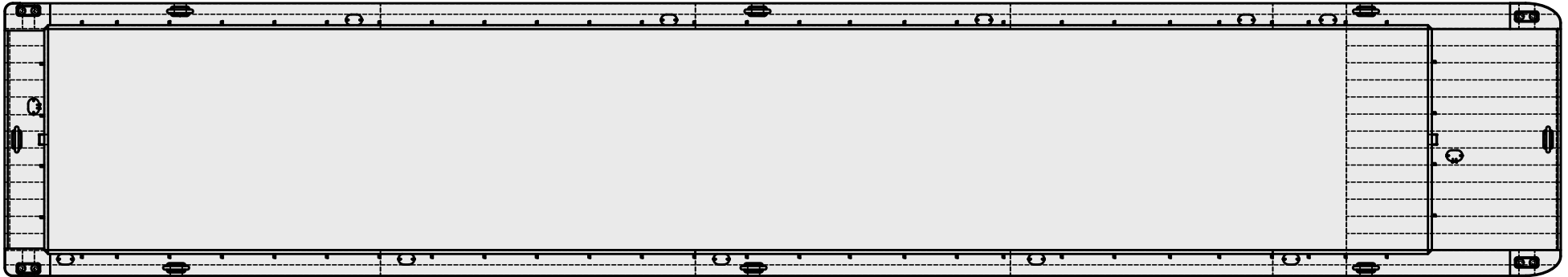


PLAN



PROFILE



DESCRIPTION

- 200' X 35' X 14'
- 5'-0" Coaming
- Fiberglass lift-off covers
- 16'-6" Headlog Height
- Two (2) 26" wide x 36" deep Towknees

VOIDS

- Rake
- Stern
- 5 Mid-Body
- Upper and Lower Intermediate Rub Bars 6" x 3/4"

DECK FITTINGS

- 10" Double Bitt (4)
- 36" Cast Steel Kevels (8)
- "D"-Rings (4)
- 15" x 23" 2-Dog R.W.T. Hatch (12)
- Cover Ladders on Bow and Stern
- No Winches

SCANTLINGS

- 3/4" Stern Corners, Stern Log, Bow Head Log, and Bow Corner Wraps
- 1/2" Innerbottom
- 3/8" Lower Slope Sheet - 5/16" Upper Slope Sheet
- 3/8" Lower Cargo Wall - 5/16" Upper Cargo Wall
- 3/8" Gunwale

SCANTLINGS cont.

- 3/8" Sides, Rake and Stern Decks
- 5/16" Coaming
- 5/8" Bilge Knuckle
- 3/8" Mid-Body Bottom
- 3/8" Rake Bottom
- 5/8" Stern Bottom

COATINGS

- All Steel (Plate and Structural) Wheelabrated SSPC-SP-10
- Pre-Construction Zinc Primer 0.50 to 0.75 MILS
- Stripe Coat bottom welds in Mid-Body and Stern
- Interior Voids - Lower 24" with Void Coat at 4.0 to 6.0MILS - SeaGuard 1050 standard

COATINGS cont.

- Exterior - 1 coat Epoxy 6.0 to 8.0 MILS - SeaGuard 6000 Haze Gray standard - bottom paint optional
- Non-skid on walking decks and hatch lids - Black Beauty standard
- Cargo Area - None
- 6" Safety Stripe around perimeter painted yellow - standard
- Manhole and Deck fittings painted white - standard
- Barge Name - 6 places - cut from plate steel and painted white

B-155

PERSONABLE. RELIABLE. FLEXIBLE.

B-155 DRAFT TABLES

[Without fiberglass covers]

SHORT TONS CARGO (without covers)														
FEET →	1	2	3	4	5	6	7	8	9	10	11	12	13	14
INCHES ↓														
0	0	76	277	480	684	891	1099	1309	1521	1734	1950	2167	2385	2606
1	0	92	294	497	702	908	1117	1327	1539	1752	1968	2185	2404	
2	0	109	311	514	719	926	1134	1344	1556	1770	1986	2203	2422	
3	0	126	327	531	736	943	1151	1362	1574	1788	2004	2221	2440	
4	0	142	344	548	753	960	1169	1380	1592	1806	2022	2239	2459	
5	0	159	361	565	770	977	1186	1397	1610	1824	2040	2258	2477	
6	0	176	378	582	787	995	1204	1415	1627	1842	2058	2276	2495	
7	0	193	395	599	805	1012	1221	1432	1645	1860	2076	2294	2514	
8	9	210	412	616	822	1030	1239	1450	1663	1878	2094	2312	2532	
9	26	226	429	633	839	1047	1256	1468	1681	1896	2112	2330	2551	
10	42	243	446	650	856	1064	1274	1485	1699	1914	2130	2349	2569	
11	59	260	463	667	874	1082	1292	1503	1716	1932	2148	2367	2587	

Table for avg reading with barge afloat on even keel, FRESH water = 321.50 SHORT TONS barge neat weight, no covers
 Cargo Hopper Volume = 87,305 Cu. Ft. (Struck)

[With fiberglass covers]

SHORT TONS CARGO (with covers)														
FEET →	1	2	3	4	5	6	7	8	9	10	11	12	13	14
INCHES ↓														
0	0	66	267	470	674	881	1089	1299	1511	1724	1940	2157	2375	2596
1	0	82	284	487	692	898	1107	1317	1529	1742	1958	2175	2394	
2	0	99	301	504	709	916	1124	1334	1546	1760	1976	2193	2412	
3	0	116	317	521	726	933	1141	1352	1564	1778	1994	2211	2430	
4	0	132	334	538	743	950	1159	1370	1582	1796	2012	2229	2449	
5	0	149	351	555	760	967	1176	1387	1600	1814	2030	2248	2467	
6	0	166	368	572	777	985	1194	1405	1617	1832	2048	2266	2485	
7	0	183	385	589	795	1002	1211	1422	1635	1850	2066	2284	2504	
8	0	200	402	606	812	1020	1229	1440	1653	1868	2084	2302	2522	
9	16	216	419	623	829	1037	1246	1458	1671	1886	2102	2320	2541	
10	32	233	436	640	846	1054	1264	1475	1689	1904	2120	2339	2559	
11	49	250	453	657	864	1072	1282	1493	1706	1922	2138	2357	2577	

Table for avg reading with barge afloat on even keel, FRESH water = 331.50 SHORT TONS neat barge weight + 10 tons for fiberglass covers
 Cargo Hopper Volume = 87,305 Cu. Ft. (Struck)

B-155