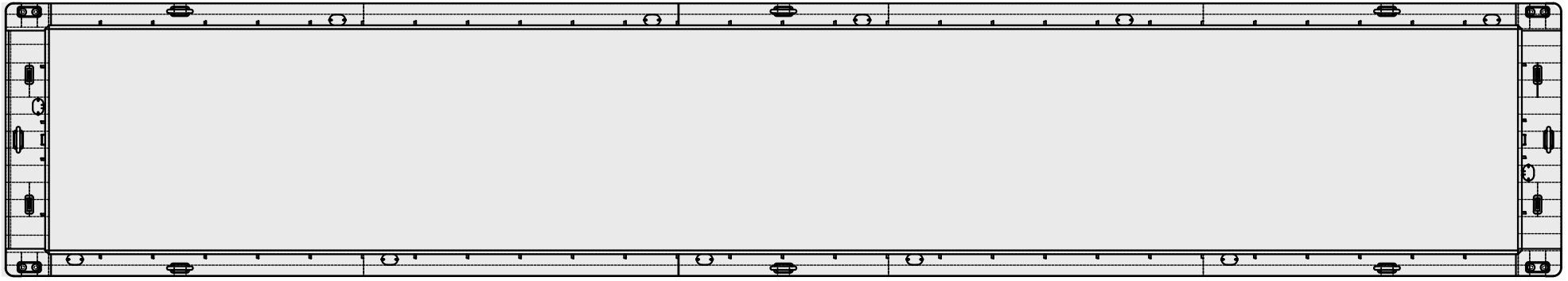
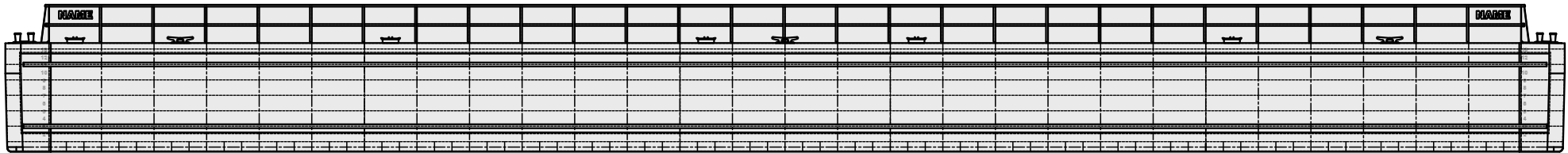


### PLAN



### PROFILE



#### DESCRIPTION

- 200' X 35' X 14'
- 5'-0" Coaming
- Fiberglass lift-off covers

#### VOIDS

- Rake
- Stern
- 5 Mid-Body
- Upper and Lower Rub Bars - 6" x 3/4"

#### DECK FITTINGS

- 10" Double Bitt (4)
- 36" Cast Steel Kevels (8)
- "D"-Rings (4)
- 15" x 23" 2-Dog R.W.T. Hatch (12)
- Ladders on Bow and Stern
- No Winches

#### SCANTLINGS

- 3/4" Stern Corners, Stern Log, Bow Head Log, and Bow Corner Wraps
- 1/2" Innerbottom
- 3/8" Cargo Wall
- 3/8" Gunwale

- 3/8" Sides
- 5/8" Bilge Knuckle
- 3/8" Mid-Body Bottom
- 5/8" End Bottoms
- 6" x 6" x 1/2" Boundry Angle

#### COATINGS

- All Steel (Plate and Structural) Wheelabrated SSPC-SP-10
- Pre-Construction Zinc Primer 0.50 to 0.75 MILS
- Stripe Coat bottom welds in Mid-Body and Stern
- Interior Voids - Lower 24" with Void Coat at 4.0 to 6.0MILS - SeaGuard 1050 standard

#### COATINGS cont.

- Exterior - 1 coat Epoxy 6.0 to 8.0 MILS - SeaGuard 6000 Haze Gray standard
- Non-skid on walking decks and hatch lids - Black Beauty standard
- Cargo Area - None
- 6" Safety Stripe around perimeter painted yellow - standard
- Manhole and Deck fittings painted white - standard
- Barge Name - 6 places - cut from plate steel

B-152

**PERSONABLE. RELIABLE. FLEXIBLE.**

### B-152 DRAFT TABLES

[Without fiberglass covers]

SHORT TONS CARGO (without covers)														
FEET →	1	2	3	4	5	6	7	8	9	10	11	12	13	14
INCHES ↓														
0	0	81	299	517	735	954	1172	1391	1609	1828	2046	2265	2483	2702
1	0	99	317	535	754	972	1190	1409	1627	1846	2064	2283	2501	
2	0	117	335	553	772	990	1209	1427	1646	1864	2083	2301	2520	
3	0	135	353	572	790	1008	1227	1445	1664	1882	2101	2319	2538	
4	0	153	372	590	808	1027	1245	1463	1682	1901	2119	2338	2556	
5	0	172	390	608	826	1045	1263	1482	1700	1919	2137	2356	2574	
6	0	190	408	626	845	1063	1281	1500	1718	1937	2156	2374	2593	
7	0	208	426	644	863	1081	1300	1518	1737	1955	2174	2392	2611	
8	8	226	444	663	881	1099	1318	1536	1755	1973	2192	2410	2629	
9	26	244	463	681	899	1118	1336	1554	1773	1992	2210	2429	2647	
10	44	263	481	699	917	1136	1354	1573	1791	2010	2228	2447	2665	
11	62	281	499	717	936	1154	1372	1591	1809	2028	2247	2465	2684	

Table for avg reading with barge afloat on even keel, FRESH water = 354.59 SHORT TONS barge neat weight  
 Cargo Hopper Volume = 95,311 Cu. Ft. (Struck)

[With fiberglass covers]

SHORT TONS CARGO (with covers)														
FEET →	1	2	3	4	5	6	7	8	9	10	11	12	13	14
INCHES ↓														
0	0	71	289	507	725	944	1162	1381	1599	1818	2036	2255	2473	2692
1	0	89	307	525	744	962	1180	1399	1617	1836	2054	2273	2491	
2	0	107	325	543	762	980	1199	1417	1636	1854	2073	2291	2510	
3	0	125	343	562	780	998	1217	1435	1654	1872	2091	2309	2528	
4	0	143	362	580	798	1017	1235	1453	1672	1891	2109	2328	2546	
5	0	162	380	598	816	1035	1253	1472	1690	1909	2127	2346	2564	
6	0	180	398	616	835	1053	1271	1490	1708	1927	2146	2364	2583	
7	0	198	416	634	853	1071	1290	1508	1727	1945	2164	2382	2601	
8	0	216	434	653	871	1089	1308	1526	1745	1963	2182	2400	2619	
9	16	234	453	671	889	1108	1326	1544	1763	1982	2200	2419	2637	
10	34	253	471	689	907	1126	1344	1563	1781	2000	2218	2437	2655	
11	52	271	489	707	926	1144	1362	1581	1799	2018	2237	2455	2674	

Table for avg reading with barge afloat on even keel, FRESH water = 364.59 SHORT TONS barge neat weight + 10 tons for covers  
 Cargo Hopper Volume = 95,311 Cu. Ft. (Struck)

### B-152

**PERSONABLE. RELIABLE. FLEXIBLE.**